



### Apartment Features\*

- Spacious 3 and 4 Bedroom Floor Plans
- Fully-Equipped Kitchens with Pantries
- Full-Sized Washer & Dryer Connections
- Vaulted Ceilings in Living Rooms
- Ceiling Fans
- Covered Carports
- Outside Storage
- Spacious Lots with Back Yards

### Community Amenities

- Playground
- Community Room
- On-Site Laundry Facility
- Emergency Maintenance
- Resident Support Services

**Rosenwald Subdivision** – all the elements of a great lifestyle at an affordable price. Here you’ll find a tradition of excellence in everything from our impeccable service to our quality construction. You’ll be delighted with desirable features such as full size washer & dryer connections, vaulted ceilings, outside storage and even private, covered carports. Our mission is to be recognized as the leader in the affordable housing market by providing an exceptional living community with unparalleled service to our residents. We fulfill this mission in a style focused on excellence and commitment.

Come visit Rosenwald today!

2965 Tulsa Street  
Shreveport, LA 71107

(318) 425-8669 Fax

Rosenwald



[RosenwaldShreveport.com](http://RosenwaldShreveport.com)

\*Availability may be limited to select apartments only. Subject to change with out notice.



(318) 934-1901



**3 Bdrm / 2 Bath**  
**1,128 Sq. Ft.\***

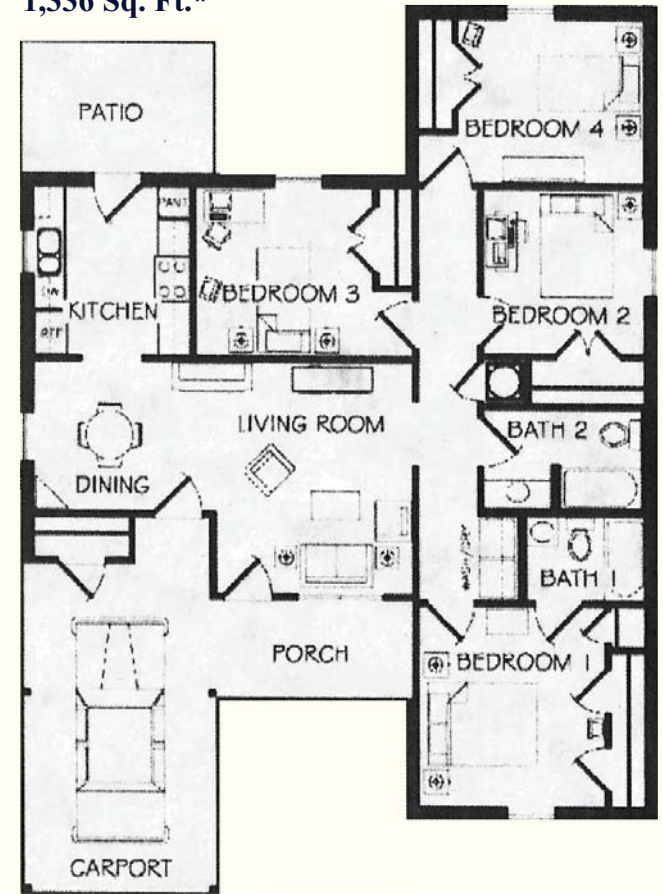
Rent \_\_\_\_\_  
 Deposit \_\_\_\_\_

**Rosenwald**



2965 Tulsa Street  
 Shreveport, LA 71107

**4 Bdrm / 2 Bath**  
**1,336 Sq. Ft.\***



Rent \_\_\_\_\_  
 Deposit \_\_\_\_\_

While the subdivision is for low to moderate incomes, the community invokes nothing but impeccable style and price of all who reside and visit.  
 Yes, you're going to love it here at Rosenwald!

\*Square footage is approximate Actual floorplans may vary